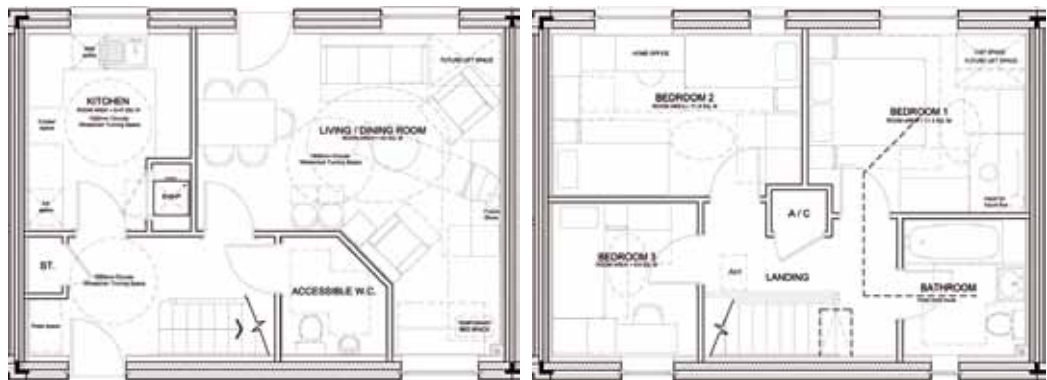


Thistledown Cottage

AVAILABLE TO PURCHASE FROM £55,000
(25% shared ownership)



GROUND FLOOR

FIRST FLOOR

- 3 BEDROOM
- MID TERRACE
- PARKING
- GARDEN
- HIGHLY INSULATED
- ASSURED TENANCY

Guide Rent £133 P.W. Plus small service charge

- **GUIDE PRICE £220,000 - PURCHASE (SHARED OWNERSHIP)**

Weekly Repayment Mortgage (of say) £55,000 over 25 years at 5% = £75 pw

Plus rent on balance of £165,000 at 1.5% = £48 pw

Total £123 pw
plus small service charge